

Sports Therapy

- Acute and Chronic Injury Rehabilitation
- Overuse Injury Treatment
- Retraining for Return to Sport
- Taping and Bracing
- Pre-season Screening

Spinal Therapy

- Joint Mobilization and Manipulation
- Exercise Prescription
- Postural Assessment
- Back and Neck Care

GUNN IMS - Intra-Muscular Stimulation

Pilates Based Core Stability Training

ICBC Treatment of Injury Post MVA

Active Rehabilitation Programs

WCB Treatment for Work Related Injury

Worksite Evaluation, Ergonomic Assessment & Wellness Program Development

Functional Capacity Assessment and Medical Legal Reporting

Women's Health

- Post Mastectomy
- Urinary Incontinence Training
- Pre and Post Natal Care
- Osteoporosis

Injury Prevention Education

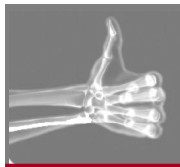
Seniors Programs

- Fall Prevention
- Fitness
- Post Surgical

Respiratory Care

Arthritis Treatment and Management

Neurology



Burrard Physiotherapy Associates

You're In The Right Hands

Physiotherapists

Lynn Chapman
Kerry Maxwell
Barbara Picton
Lynda Lawrence
Bryn Edwards
Antony Causton
Shahab Rezania
Allison Downie
Linda Warren

FOR APPOINTMENTS CONTACT

Tel: 604 684 1640

WALK-IN'S WELCOME

#1020 - 1200 Burrard Street

Vancouver, BC. V6Z 2C7

Phone: 604 684 1640

Fax: 604 684 1642

Email: bphysioa@shaw.ca

www.burrardphysioassociates.com

LOW BACK PAIN



PHYSIOTHERAPY AND LOW BACK PAIN

Back pain is very common. 85% of people will suffer from back pain at some point in their lives. In most cases low back pain can be treated with **conservative** (nonsurgical) methods. Problems can be avoided by knowing what causes the pain and what to do to prevent it.

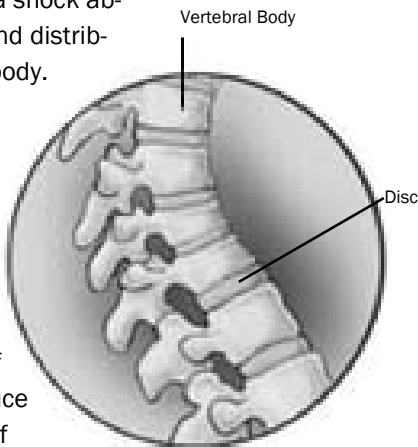
HOW YOUR BACK WORKS

Your spine is a complex system of interlocking working pieces. The bones, or *vertebrae*, are separated by discs and held together by ligaments and supporting muscles.

The basic unit of the spine consists of two vertebrae and a disc. The *disc* acts as a shock absorber and it supports and distributes the weight of your body.

The two small joints (*apophyseal* or *facet* joints) guide the movement in your back.

Ligaments bind your vertebrae together and give additional strength to the discs and joints of the back. *Muscles* produce and control movement of your spine. They are an important source of strength and support for your back.



IS MY BACK OUT?

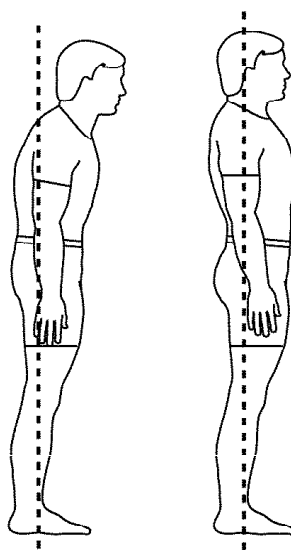
No! Your discs are firmly attached to the vertebrae above and below by ligaments. You cannot slip a disc or put your back out. A disc may tear (prolapse or rupture) or become thin or bulge with wear and age. Commonly back pain is caused by joint or muscle problems.

WHAT CAUSES BACK PAIN?

The spine is very complex and many things can go wrong. Injuries can occur to discs, joints and ligaments due to acute trauma, poor postural habits, and the accumulation of physical stress on the spine. Problems can occur as a result of arthritis, degenerating discs, muscle tension and muscle weakness.

WHAT SORT OF PAIN IS FELT?

Pain may be nagging, sharp, uncomfortable or sheer agony. It can last for hours, days or years if uncorrected. Pain may be felt in the back or it may be referred pain. That is, it may be felt in the lower abdomen, groin, leg or foot. Sensations such as pins and needles, numbness, and burning may also be felt.



Adopt good habits: *POSTURE* - knees soft, not pushed back. Shoulders relaxed, not hunched up or rolled forwards. Head level with chin tucked in.

Stand tall without tension!!

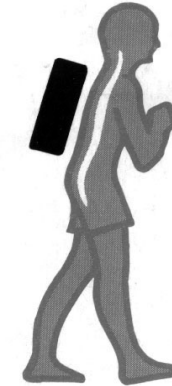
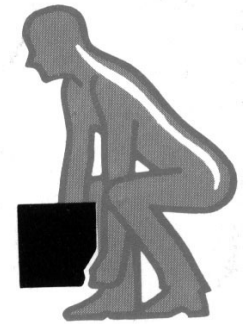
Posture, should be stable, balanced and relaxed when sitting, walking and standing.

WORK - avoid prolonged sitting or working in the same position. Stretch, change positions, redesign your work area.



LIFTING - keep loads close to the body, feet well apart, bend the knees more than the back, lift with leg power.

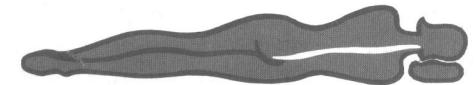
CARRYING - hold loads close to your body or strapped to your back.



SLEEPING - your mattress should be firm enough to support your natural shape.

WEIGHT CONTROL - excess weight puts extra strain on your spine.

EXERCISE - keep your spine and trunk muscles flexible and strong with correct back and abdominal muscle exercises.



REST & BE CAREFUL!

If you injure your back, some initial rest is essential to give your spine the chance to recover and repair. Don't push on regardless. Rest must be followed with a gradual return to activity. Our physiotherapists at **Burrard Physiotherapy** will guide you through this process.

IMPORTANT Seek early treatment and advice. It can dramatically reduce your recovery time!

AIMS OF PHYSIOTHERAPY

- ◆ Increase Mobility & Stability
- ◆ Alleviate Pain
- ◆ Stretch Tightened Muscles
- ◆ Retrain Muscles—Strength, Co-ordination & Endurance
- ◆ Prevent Re-injury